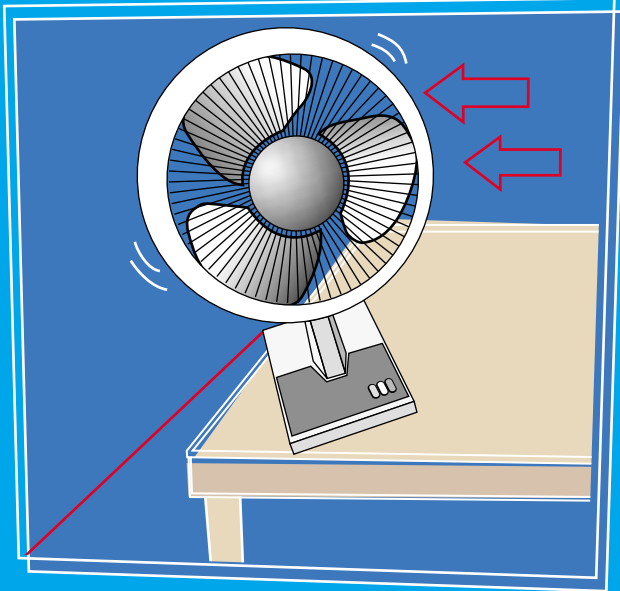


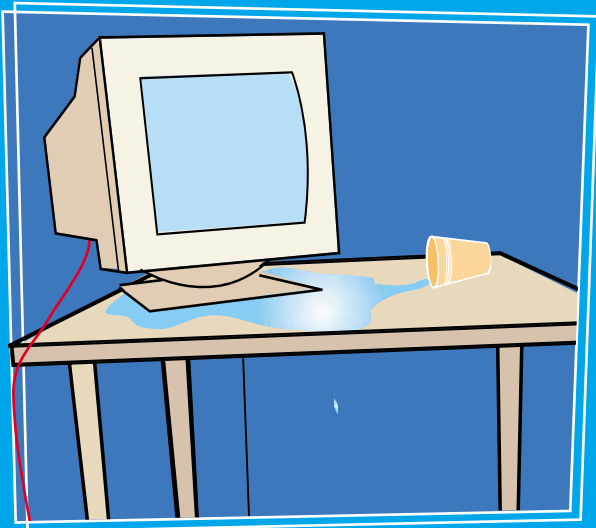
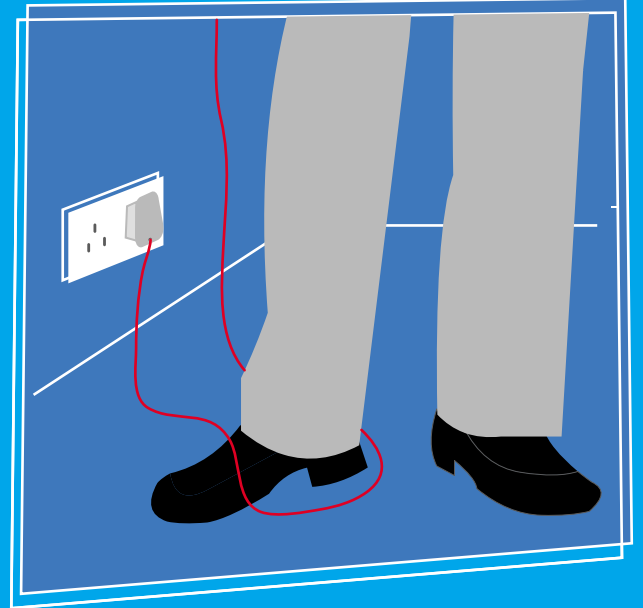
BEFORE SWITCHING ON



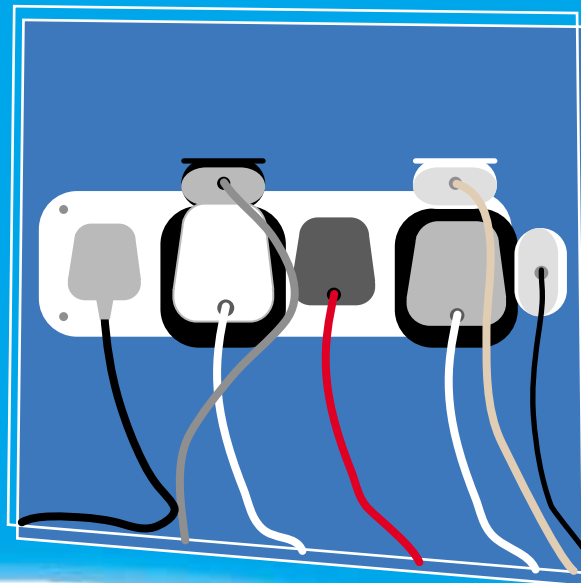
"Power cables must be long enough to reach socket without straining"



"Keep cables away from walkways to avoid tripping people up"



"DO NOT stand drinks on or near appliances"

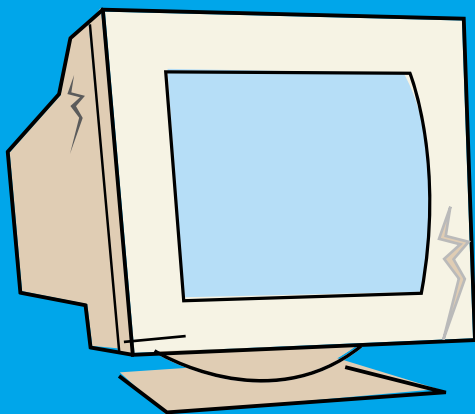


"DO NOT overload extension leads"

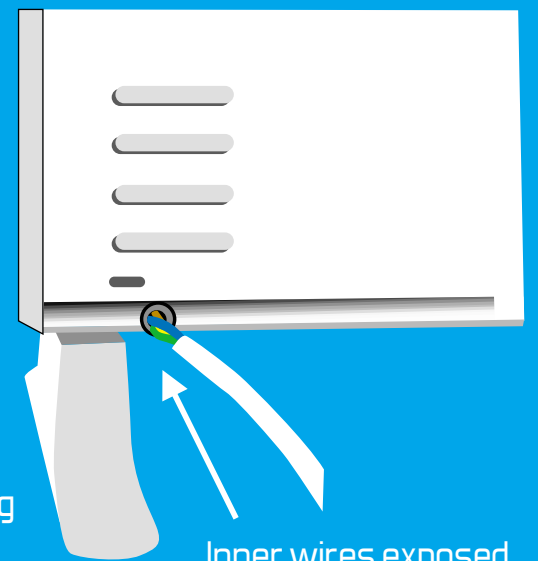
DO NOT USE IF!



Overheating

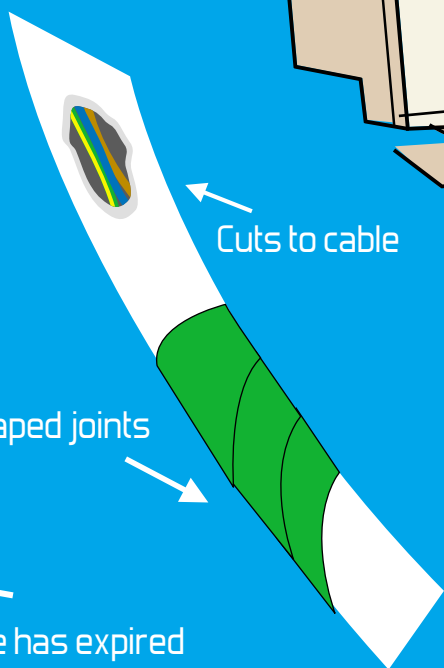


Damaged casing

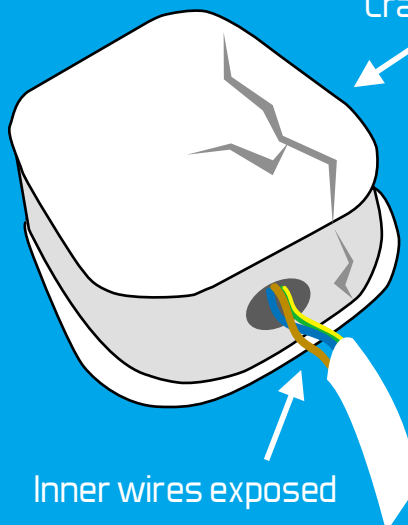


Cracked casing

Inner wires exposed



Cuts to cable



Inner wires exposed

Taped joints

Tested for electrical safety	
Date:	08.03.00
Initial:	RW
Re-test:	08.03.01

Date has expired

